

Going underground in the Cotswolds

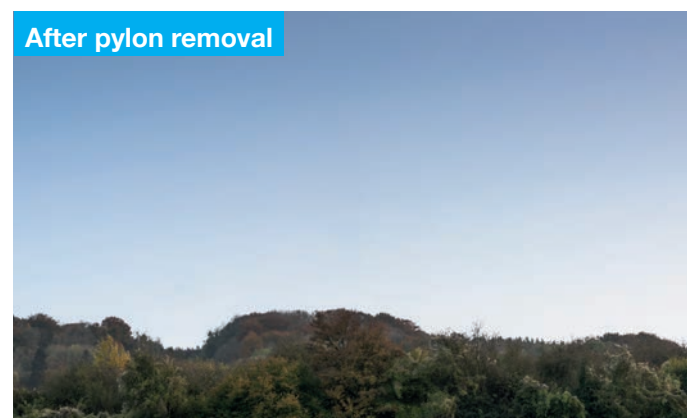


Transforming the landscape on the Cotswold Plateau

The Visual Impact Provision (VIP) project in the Cotswolds National Landscape aims to reduce the visual impact of a prominent section of National Grid's existing overhead line.

Around 7km of overhead line and ~ 18 pylons will be permanently removed from the landscape – from Postlip Mill to the edge of the Cotswold Plateau north of Dowdeswell Wood.

National Grid is inviting local people and stakeholders to see how the plans are progressing and find out how the updated proposals could transform the landscape in this popular and protected location.



Meet the team and get the latest updates on our progress at one of our public drop-in events:

Saturday 1 July, 10:00-14:00

Cleeve Hill Common car park,
Southam, GL52 3NF

Thursday 6 July, 15:00-19:30

Stanton Hall, Church St,
Charlton Kings GL53 8AR

Saturday 8 July, 10:00-14:00

Winchcombe Museum, High St,
Winchcombe, GL54 5LJ

Thursday 13 July, 15:00-19:30

Whittington Village Hall,
Whittington, GL54 4HD



For more information visit our website: nationalgrid.com/cotswoldsvip
Please get in touch on: **0330 134 0051** or email visualimpact@nationalgrid.com
Or write to us at: **FREEPOST VISUAL IMPACT PROVISION**

nationalgrid